



# MGS18

## bourdon tube pressure gauges all stainless steel construction DS 1.5", 2" (40-50 mm)



PED 2014/68/EU

These instruments are designed for use in chemical and petrochemical processing industries, and in conventional power plants, to measure gaseous or liquid media which do not have high viscosity or do not cristalize. They are built to resist the most severe operating conditions created by the ambient environment and the process medium. For use on power units, pumps, hydro-cleaning machines, presses, engine compressors, turbines, diesel engines, chemical, petrochemical and refrigerating plants and on machines and equipment where pulsating pressures or mechanical vibrations are apparent, the liquid-filled version is recommended.

### 01.18.1 - Standard Model, DS 1.5" (40mm)

**Design:** EN 837-1.

**Ranges:** from 0...30 to 0...600 psi (from 0...2.5 to 0...40 bar or equivalent units).

**Accuracy class:** 1.6 as per EN 837-1.

**Ambient temperature:** -13...+149 °F (-25...+65 °C).

**Process fluid temperature:** -22...+212 °F (-30...+100 °C).

**Thermal drift:** ±0,4 %/10 °C of range (starting from 68°F - 20°C).

**Working pressure:**

75% of FSV for static pressure;

66% of FSV for pulsating pressure.

**Over pressure limit (15 min max):**

25% of FSV.

**Protection degree:** IP 55 as per EN 60529/IEC 529.

**Socket material:** AISI 316L st.st.

**Bourdon tube:** AISI 316L st.st.

**Case:** stainless steel.

**Ring:** stainless steel, bayonet lock.

**Window:** glass.

**Movement:** stainless steel.

**Dial:** aluminium, white with black markings.

**Pointer:** not adjustable, aluminium, black.

### 01.18.1 - Standard Model, DS 2" (50mm)

**Ambient temperature:** -13...+149 °F (-25...+65 °C).

**Protecti on degree:** IP 55 as per EN 60529/IEC 529.

**Case:** stainless steel, crimped.

**Ring:** stainless steel, crimped.

**Window:** plastic.

**Other features:** as Standard Model, DS 1.5" (40mm).

### 01.18.2 - Fillable Model, DS 2" (50mm)

**Protecti on degree:** IP 67 as per EN 60529/IEC 529.

**Other features:** as Standard Model, DS 2" (50mm).

### 01.18.3 - Filled Model, DS 2" (50mm)

**Damping liquid:** glycerine 98%.

**Ambient temperature:** +32...+149 °F (0...+65 °C).

**Process fluid temperature:** max +149°F (+65 °C).

**Protecti on degree:** IP 67 as per IEC 529.

**Other features:** as Standard Model, DS 2" (50mm).

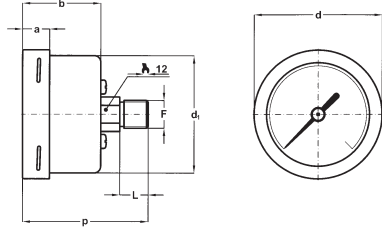


ISO 9001 : 2008  
Cert. nr. 0433/6

**bourdon tube pressure gauges**  
**all stainless steel construction, DS 1.5", 2" (40-50mm)**

**MGS18**

RC6-08/13

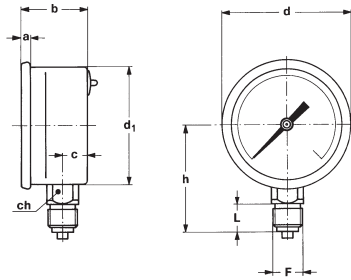


**DS 1.5" (40mm)**  
**D - BACK CONNECTION**

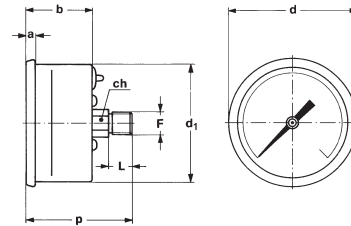
Mounting	DS	F	a	b	c	d	d <sub>1</sub>	h	p	L	ch	Weight (1)
Lower	<b>B</b> 2" (50)	<b>21M</b> - G 1/4 A	0.15"	1.14"	0.43"	2.20"	2.00"	1.94" - 1.87"		0.59" - 0.51"	0.55"	0.20 lbs (0,095 kg)
		<b>23M</b> - 1/4-18 NPT	(4)	(29)	(11)	(56)	(51)	(49,5 - 47,5)		(15-13)	(14)	
Back	<b>A</b> 1.5" (40)	<b>11M</b> - G 1/8 A	0.37"	1.08"		1.77"	1.61"		1.73"	0.39"	0.47"	0.15 lbs (0,07 kg)
		<b>13M</b> - 1/8-27 NPT	(9,5)	(27,5)		(45)	(41)		(44)	(10)	(12)	
Back	<b>B</b> 2" (50)	<b>11M</b> - G 1/8 A	0.15"	1.14"		2.20"	2.00"		1.81"	0.39"	0.47"	0.17 lbs (0,078 kg)
		<b>13M</b> - 1/8-27 NPT	(4)	(29)		(56)	(51)		(46)	(10)	(12)	

dimensions : inches (mm)

(1) add 0.09 lbs (0,045 kg) when filled



**DS 2" (50mm)**  
**A - LOWER CONNECTION**



**DS 2" (50mm)**  
**D - BACK CONNECTION**

**OPTIONS**

Diameters	DS 1.5" (40mm)	DS 2" (50mm)
<b>B</b> - "Ring"-clamp, for back connection pressure gauges		◆
<b>E65</b> - IP 65 execution	◆	

**"HOW TO ORDER" SEQUENCE**

Section / Model / Case / Mounting / Diameter / Range / Process connection / Options

<b>1</b>	<b>18</b>	<b>1</b>	<b>A</b>	<b>A</b>	<b>11M</b>	<b>B</b>
		<b>2</b>	<b>D</b>	<b>B</b>	<b>13M</b>	<b>E65...T30</b>
		<b>3</b>			<b>21M</b>	
					<b>23M</b>	

Copyright © Nuova Fima srl. All rights reserved. Any part of this publication should not be reproduced without a written Nuova Fima's srl approval

**NUOVA FIMA USA Inc.**  
www.nuovafima.com - e-mail: infousa@nuovafima.com  
4123 Hollister, Suite G - TX 77080 Houston  
TEL. +1 713.690.9800 - FAX +1 713.690.9803

-2-

**NUOVA FIMA srl**  
www.nuovafima.com - e-mail: info@nuovafima.com  
P.O. BOX 58 - VIA C. BATTISTI 59 - 28045 INVORIO (NO) ITALY  
TEL. +39 0322 253200 - FAX +39 0322 253232



IN ORDER TO IMPROVE THEIR PRODUCTION, MESSRS. NUOVA FIMA RESERVE THE RIGHT TO THEMSELVES TO MAKE ALL THE MODIFICATIONS THAT THEY DEEM INDISPENSABLE AT ANY TIME. UPDATED DATA-SHEETS ARE AVAILABLE ON SITE: www.nuovafima.com