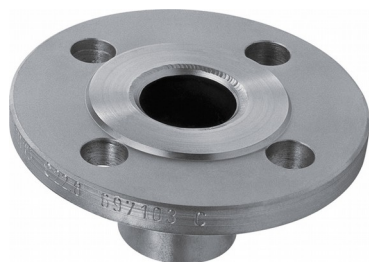


Product Information

Flange connection FL



Characteristics

Installation flange with weld-on nozzle for the appropriate installation of flow monitors and measuring devices. Can be combined with all devices with installation flange according to DIN 2526, PN 16, DN 32.

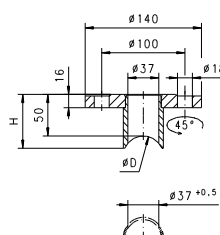
Technical data

Flange	DIN 2527, PN 16, DN 32	
Seal surface	DIN 2526 Form C	
Flat seal	Ø82 / 43 x 2 Novapress 200	
Screw	Hexagon screw DIN EN 24017 M16x50-5.6	
Nut	Hexagon nut DIN EN 24032 M16-5	
Pressure	PN 16	
Medium temperature	-40..+200 °C	
Ambient temperature	-40..+200 °C	
Materials medium-contact	<i>Steel construction:</i> RSt 37 Novapress 200 Steel 5.6 + 5	<i>Stainless steel construction:</i> 1.4305 Novapress 200 Steel 5.6 + 5
Weight	2.3 kg	

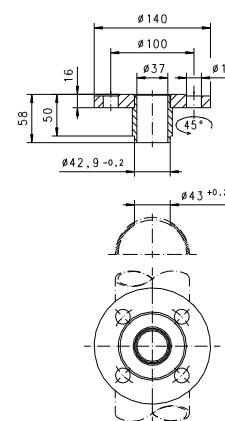
Dimensions and weights

For	Types	ØD	H
DN 40	FL-032.040	48.3	65
DN 50	FL-032.050	60.3	61
DN 65	FL-032.065	76.1	57
DN 80 - 300	FL-032.080	-	58

DN 40 - 65



DN 80 - 500



Ordering code

FL -

○=Option

1. Flange size	032	DN 32, PN 16, flange DIN 2527
3. Construction material	S	steel
	K ○	stainless steel
4. For nominal width	040	DN 40
	050	DN 50
	065	DN 65
	080	DN 80 - 300