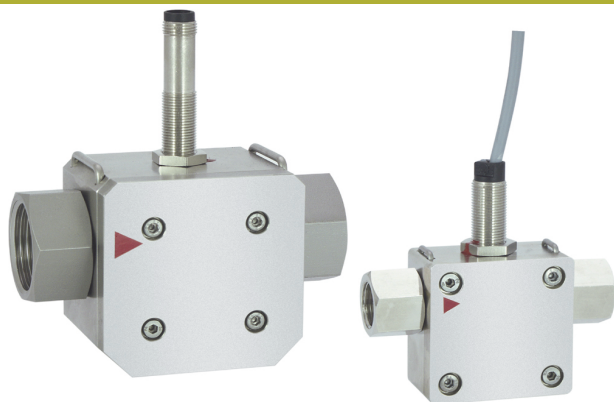


Product Information

RRH

**Flow Transmitter
RRH**



- Uncomplicated measurement of flow rates
- Metal housing with Hall sensor
- Working pressure up to 100 bar
- Long working life thanks to high quality ceramic axis and special plastic bearing
- Run-in and run-out sections are not necessary.
- Modular construction with various connection systems
- Plug-in and rotatable connections
- Output signal PNP or NPN
- Intrinsically safe behaviour
- Optionally, non-return valve, filter, constant flow rate device in the connections

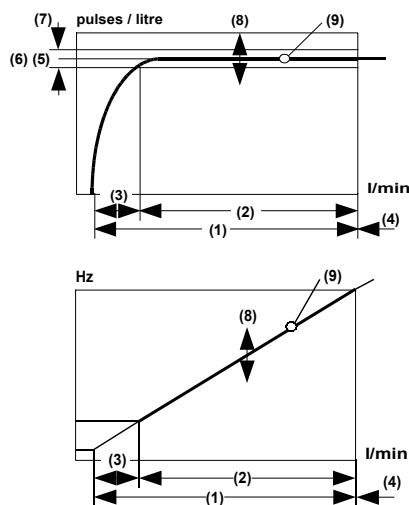
Characteristics

The flow meter consists of a spinner which is rotated by the flowing medium. The rotor's rotational speed is proportional to the flow volume per unit time. The rotor is fitted with magnets. A Hall sensor records the rotational speed, which is proportional to the flow rate.

Technical data

Sensor	hall element	
Nominal width	DN 10 (RRH-010) DN 25 (RRH-025)	
Mechanical Connection	female thread G 3/8, G 1 male thread G 3/8 A, G 1 A hose nozzle Ø11, Ø30 (other threaded, crimped, and plug-in connections, connections with constant flow rate device or limiters available on request)	
Pressure resistance	PN 100 bar	
Metering ranges	see table "Ranges"	
Medium temperature	0..100 °C	
Materials medium-contact	Housing	CW614N nickelled or 1.4305
	Rotor	PVDF with magnets, glued with epoxy resin
	Bearing	Iglidur X
	Axis	ceramic ZrO ₂ -TZP
	Seal	FKM

Materials non-medium-contact	PVC cable 1.4305, 1.4301, CW614N nickelled	
Current consumption	30 mA	
Output current	max. 100 mA	
Electrical connection	cable 2 m or for Round plug connector M12x1, 4-pole	
Resistant to short circuits	yes	
Reversal polarity protected	yes	
Ingress protection	IP 67	
Weight	RRH-010	approx. 0.6 kg
	RRH-025	approx. 1.9 kg
Conformity	CE	



- (1) Complete metering range
- (2) Specific metering range
- (3) Start-up range
- (4) Extended operating range, increased wear, Dp > 0.5 bar
- (5) Pulses / litre (details on label)
- (6) Average pulses / litre
- (7) Tolerance ±3 % of the measured value
- (8) Scatter ±10 % of the pulses / litre value (5) in the batch
- (9) Reproducibility (±1 % of the full scale value) is the repeat accuracy of a frequency, relative to l/min
- (10) Max. frequency, related to the relevant metering range up to approx. 0.5 bar pressure drop across the flow meter

Ranges

Types	Q _{max} l/min H ₂ O	Metering range			Pulses / litre (6)	frequency Hz EW (10)
		l/min H ₂ O				
		(1)	(2)	(3)		
010...020	1.8	0.1.. 1.5	0.5.. 1.5	0.1..0.5	4955	124
010...050	12.0	0.2..10.0	2.0.. 10	0.2..2.0	1632	272
010...070	14.4	0.4..12.0	2.0.. 12	0.4..2.0	860	172
025...080	36.0	2.0..30.0	3.0.. 30	2.0..3.0	544	272
025...120	72.0	3.0..60.0	5.0.. 60	3.0..5.0	295	295
025...160	120.0	4.0.. 100	6.0..100	4.0..6.0	126	210

The measured values were determined using a standing sensor in a horizontal flow of water at 25 °C.

