

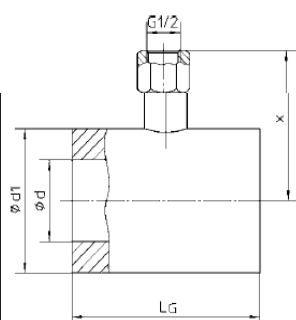
# SEPARATEUR "ILS" IN LINE SEAL



## Dimensional Data, Weight, Minimum Pressure Ranges for Pressure Gauges

Dimensional Data mm / inches , Weight kg / lb

Model	DN	PN	b	d	d1	d2	d3	d5	f	L <sub>G</sub> <sup>±0.5</sup>	x	Weight (approx.)							
Cellular type	20	16 - 40	—	19.8 .78	58 2.28	—	—	—	—	126 4.96	76	1.56							
											78.5 3.09	2.46 5.42							
	25	16 - 400			26.2 1.03						63 2.48						89.5 3.52	4.19 9.24	
	40	16 - 320			38.5 1.52						85 3.35							94.5 3.72	3.77 8.31
	50	400		bar	50.7 2						95 3.74							139.5 5.49	3.92 8.64
	80	16 - 250		—	79.7 3.14						130 5.12						100 3.94	112 4.41	6.18 13.62
		320 - 400																157 6.18	6.33 13.96
100	16 - 160	—	99.7 3.93	150 5.91							122 4.8	7.18 15.83							
	250 - 400										167 6.57	7.33 16.16							



DIN EN 1092-1  
Form B2  
(PN 16-PN 100)

DIN 2526  
Form E  
(PN 160-PN 400)