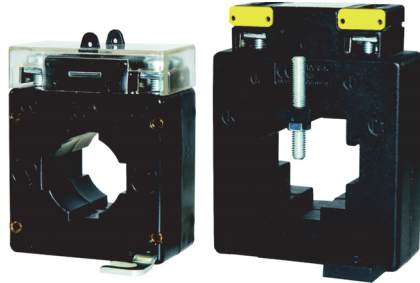


Product Information

Slip-Over Current Transformer ASW



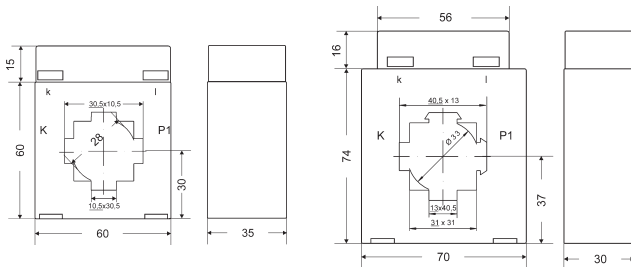
Model A

Model B

Characteristics

- Primary current from 50 A up to 1000 A
- Slip whole for different squares
- Easy handling
- Extended secondary terminal cover
- Innovative secondary clamp technology
- Break check plastic case
- Casting compound
- Isolation class E
- Accuracy class 3, > 75 A class 1
- Frequency 50-60 Hz

Dimensions



Ordering code

ASW - 1. - 2.

1. Primary current [A] (please state in clear text)			
50/ 60/ 75/ 80/ (power consumption 1.25 VA; model A)			
100/ 125/ 150/ 200/ 250/ 300/ 400/ 500/ 600/ 750/ 800/ 1000 (power consumption 2.5 VA; model B)			
2. Secondary current [A]		1.25 VA	2.5 VA
1	max. burden [Ω]	1.25	2.5
5	max. burden [Ω]	0.05	0.1
Accessories incl. by delivery:			
1 primary rail clamp,			
2 secondary terminal covers yellow			
2 wall mounting clips			
Accessories			
Snap clamps for DIN rail mounting TS35			

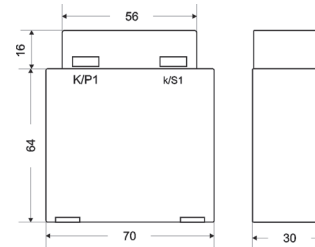
Wounded Current Transformer WSW



Characteristics

- Primary current from 1 A up to 40 A
- Easy handling
- Extended secondary terminal cover
- Innovative secondary clamp technology
- Break check plastic case
- Casting compound
- Isolation class E
- Accuracy class 1
- Frequency 50-60 Hz

Dimensions



Ordering code

WSW - 1. - 2.

1. Primary current [A] (please state in clear text)	
1/ 2/ 2.5/ 5/ 6/ 7.5/ 10/ 12.5/ 15/ 20/ 25/ 30/ 40	
2. Secondary current [A]	
1	
5	
Accessories incl. by delivery:	
2 secondary terminal covers yellow	
2 wall mounting clips	
Accessories	
Snap clamps for DIN rail mounting TS35	