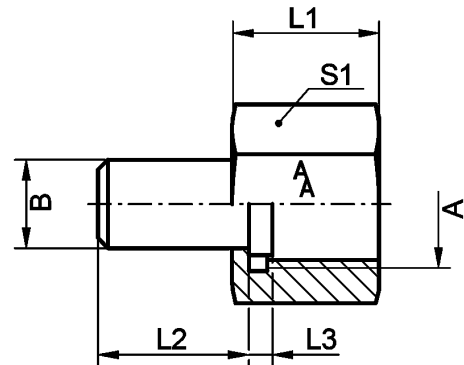
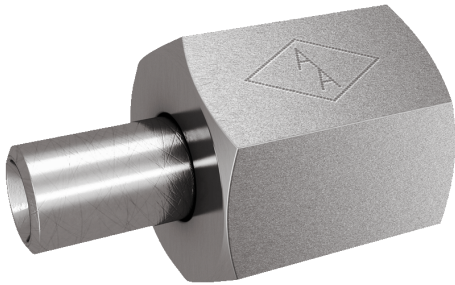


**Fig. 82**

Sleeve, material: brass, steel, 1.4571

DIN	A	B	PN / Bar	L1 / mm	S1	Material	Art.Nr.
DIN 16283	G1/4	G1/4	250	23	17	Messing	10082011
DIN 16283	G1/4	G1/4	400	23	17	Stahl	10082012
DIN 16283	G1/4	G1/4	400	23	17	1.4571	10082013
DIN 16283	G1/2	G1/4	250	32	27	Messing	10082041
DIN 16283	G1/2	G1/4	400	32	27	1.4571	10082043
DIN 16283	G1/2	G1/2	250	36	27	Messing	10082061
DIN 16283	G1/2	G1/2	400	36	27	Stahl	10082062
DIN 16283	G1/2	G1/2	400	36	27	1.4571	10082063



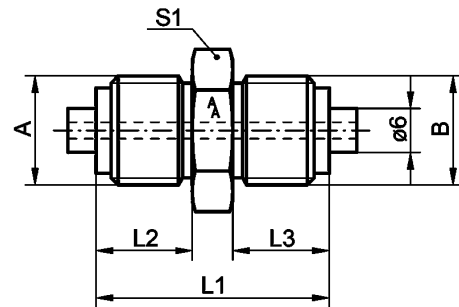
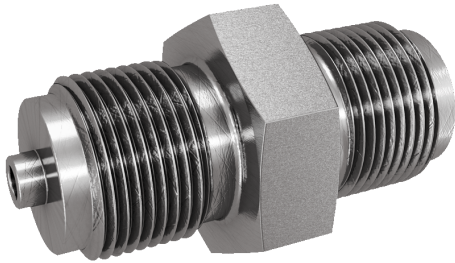


**Fig. 85**

Union nut and welding nipple, DIN 16284, material: brass, steel, 1.4571

DIN	A	B / mm	PN / Bar	L1 / mm	L2 / mm	L3 / mm	S1	Material	Art.Nr.
DIN 16284	G1/2	12	250	30	24	6	27	Messing	10085041
DIN 16284	G1/2	12	400	30	24	6	27	Stahl	10085042
DIN 16284	G1/2	12	400	30	24	6	27	1.4571	10085043



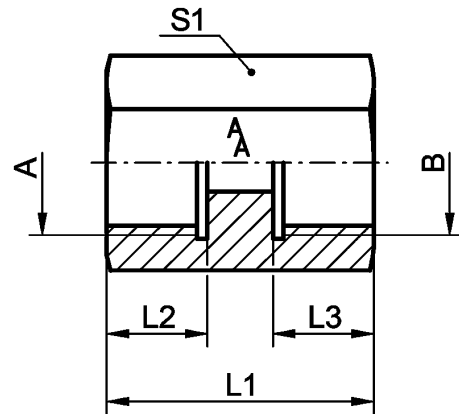
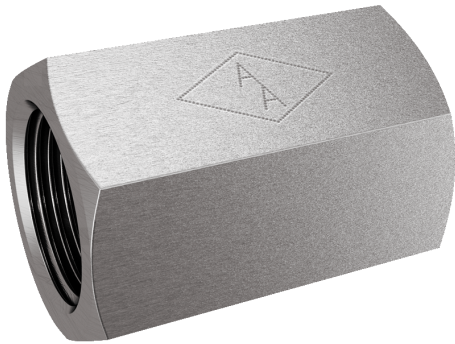


**Fig. 86/DoNi**

Manometer double nipple, right x right, material: brass, steel, 1.4571

A	B	L1 / mm	L2 / mm	L3 / mm	S1	Material	Art.Nr.
G1/4	G1/4	34	13	13	14	Messing	10086101
G1/4	G1/4	34	13	13	14	Stahl	10086102
G1/4	G1/4	34	13	13	14	1.4571	10086103
G1/4	G1/2	43	13	20	27	Messing	10086121
G1/4	G1/2	43	13	20	27	1.4571	10086123
G1/2	G1/2	50	20	20	27	Messing	10086131
G1/2	G1/2	50	20	20	27	Stahl	10086132
G1/2	G1/2	50	20	20	27	1.4571	10086133



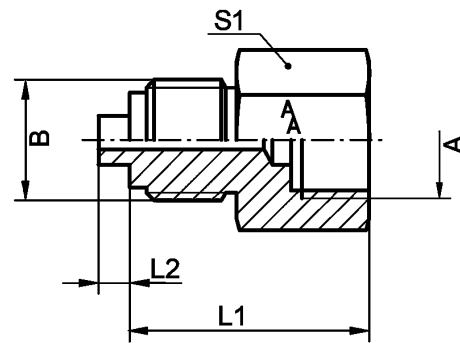


**Fig. 86/Muffe**

Manometer connection, socket with separation, material: brass, steel, 1.4571

A	B	L1 / mm	L2 / mm	L3 / mm	S1	Material	Art.Nr.
G1/4	G1/4	30	13	13	19	Messing	10086011
G1/4	G1/4	30	13	13	19	1.4571	10086013
G1/2	G1/2	40	16	16	27	Messing	10086021
G1/2	G1/2	40	16	16	27	Stahl	10086022
G1/2	G1/2	40	16	16	27	1.4571	10086023





**Fig. 87**

Manometer connector, female thread x male thread, material: brass, steel, 1.4571

A	B	L1 / mm	L2 / mm	S1	Material	Art.Nr.
G1/8	G1/4	27	3	17	Messing	10087011
G1/8	G1/4	27	3	17	Stahl	10087012
G1/8	G1/4	27	3	17	1.4571	10087013
G1/8	G1/2	32	3	24	1.4571	10087023
G1/4	G1/8	28	0	17	Messing	10087031
G1/4	G1/8	25	0	17	1.4571	10087033
G1/4	G1/4	28	3	17	Messing	10087041
G1/4	G1/4	28	3	17	1.4571	10087043
G1/4	G3/8	35	3	22	Messing	10087051
G1/4	G3/8	35	3	22	1.4571	10087053
G1/4	G1/2	37	3	24	Messing	10087061
G1/4	G1/2	37	3	24	Stahl	10087062
G1/4	G1/2	37	3	24	1.4571	10087063
G1/4	M12x1,5	28	3	17	Messing	10087081
G1/4	M12x1,5	28	3	17	1.4571	10087083
G3/8	G1/4	37	3	22	Messing	10087101
G3/8	G1/4	37	3	22	1.4571	10087103
G3/8	G1/2	45	3	24	Messing	10087111
G3/8	G1/2	45	3	24	1.4571	10087113
G1/2	G1/4	39	3	27	Messing	10087131
G1/2	G1/4	39	3	27	1.4571	10087133



G1/2	G3/8	45	3	27	Messing	10087141
G1/2	G3/8	45	3	27	1.4571	10087143
G1/2	G1/2	45	3	27	Messing	10087151
G1/2	G1/2	45	3	27	Stahl	10087152
G1/2	G1/2	45	3	27	1.4571	10087153
G1/2	G3/4	45	3	32	Messing	10087161
G1/2	G3/4	45	3	32	1.4571	10087163
G1/2	M20x1,5	45	3	27	Messing	10087181
G1/2	M20x1,5	45	3	27	1.4571	10087183
G3/4	G1/4	38	3	36	1.4571	10087193
G3/4	G1/2	45	3	36	Messing	10087201
G3/4	G1/2	45	3	36	1.4571	10087203
M20x1,5	G1/2	46	3	27	Messing	10087251
M20x1,5	G1/2	46	3	27	1.4571	10087253

