



MS4

bourdon tube pressure gauges anti-vibration version DS 4" (100mm)



PED 2014/68/EU

Instruments designed for use on power units, pump, hydro-cleaning machines, presses, engine compressors, turbines, diesel engines, chemical, petrochemical and refrigerating plants and on machines and equipment where pulsating pressures or mechanical vibrations are apparent. They can be used with gaseous or liquid media which do not corrode copper alloy and which do not have high viscosity or do not cristalize.

1.04.2 - Fillable Model

Design: EN 837-1.

Safety designation: S1 as per EN 837-2.

Ranges: from 0...15 to 0...15000 PSI (from 0...1 to 0...1000 bar or other equivalent units).

Accuracy class: 1,6 as per EN 837-1.

Ambient temperature: -13...+149°F (-25...+65 °C).

Process fluid temperature: +212°F (max +100 °C).

Thermal drift: max ±0,4 %/10 °C of ranges (starting from 68°F- 20°C).

Working pressure:

75% of FSV for static pressure;

66% of FSV for pulsating pressure.

Overpressure (max 15 min): 25% of FSV

of ranges ≤ 1500 psi (100 bar);

15% of FSV for ranges over 1500 psi (100 bar).

Protection degree: IP 67 as per IEC 529.

Socket material: copper alloy, with internal restrictor ø 0.03" (0,8 mm)

Bourdon tube:

copper alloy for ranges ≤ 10000 psi (600 bar);

AISI 316L st.st. for ranges 15000 psi (1000 bar).

Case: stainless steel.

Ring: stainless steel, crimped.

Window: tempered glass.

Movement: copper and stainless steel.

Dial: aluminium, white with black markings

Pointer: not adjustable, aluminium,black

1.04.3 - Filled Model

Damping liquid: glycerine 98%, silicon oil.

Ambient temperature:

+32...+149 °F (0...+65 °C) with glycerine filling;

-40...+149 °F (-40...+65 °C) with silicon oil filling.

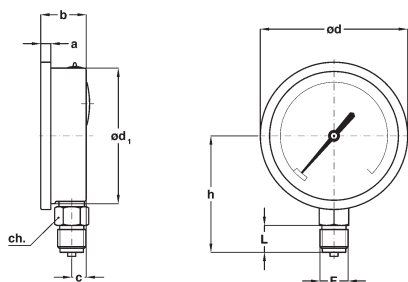
Process fluid temperature: max+149°F (+65°C) .

Other features: as Fillable Model.

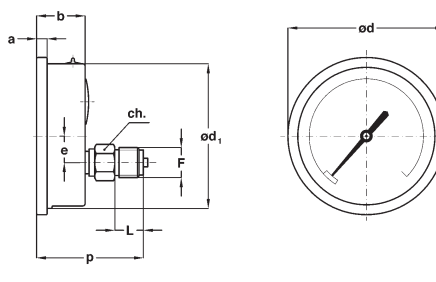


ISO 9001 : 2008

Cert. nr. 0433/6



A - LOWER CONNECTION



D - BACK CONNECTION

Mounting	F	a	b	c	d	d ₁	e (3)	h	p	ch	L	Weight
Lower	41M - G 1/2 A	0.29"	1.33"	0.43"	4.33"	3.97"		3.42"		0.86"	0.78"	0.88 lbs (1)
	43M - 1/2-14 NPT	(7,5)	(34)	(11)	(110)	(101)		(87)		(22)	(20)	(0,4 kg)
Back	41M - G 1/2 A	0.29"	1.33"		4.33"	3.97"	0.73"		2.95"	0.86"	0.78"	0.79 lbs (2)
	43M - 1/2-14 NPT	(7,5)	(34)		(110)	(101)	(18,5)		(75)	(22)	(20)	(0,36 kg)

(1) Add 0.5 lbs (0,23 kg) when filled - (2) Add 0.53 lbs (0,24 kg) when filled

OPTIONS

Model	fillable	filled
B - "U"-clamp, for back connection pressure gauges	◆	◆
C - Back flange, for lower connection pressure gauges	◆	◆
E - Front flange, for back connection pressure gauges	◆	◆
P01 - Suitable for filling with silicone	◆	
S06 - Restrictor plug ø 0.01" (0,4 mm)	◆	◆
S10 - Silicone filling		◆

"HOW TO ORDER" SEQUENCE

Section / Model / Case / Mounting / Diameter / Range / Process connection / Options
1 04 2 A E 41M B, C, E
3 D 43M P01...S10

Copyright © Nuova Fima srl. All rights reserved. Any part of this publication should not be reproduced without a written Nuova Fima's srl approval

NUOVA FIMA USA Inc.
 www.nuovafima.com - e-mail: infousa@nuovafima.com
 4123 Hollister, Suite G - TX 77080 Houston
 TEL. +1 713.690.9800 - FAX +1 713.690.9803

-2-

NUOVA FIMA srl
 www.nuovafima.com - e-mail: info@nuovafima.com
 P.O. BOX 58 - VIA C. BATTISTI 59 - 28045 INVORIO (NO) ITALY
 TEL. +39 0322 253200 - FAX +39 0322 253232

