



300 DGC

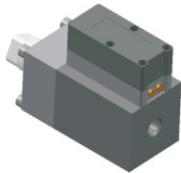
ΔP Range: 0 to 0.075 upto 4 bar
0 to 1 upto 60 psi

COMBINATIONS

Gauge

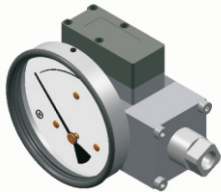


Switch



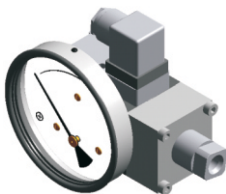
Gauge + switch

(with a terminal strip inside)



Gauge + switch

(with a DIN plug on top)



Specifications

Accuracy	±2% of the FSD (Ascending)
Migration	No migration ; Zero leakage from high to low port
Range	0-0.075 to 0-4 bar or equivalent ranges in other units
First marking on the scale	15% of the FSD
Sensing element	Diaphragm
Wetted parts	Diaphragm, body material, SS 302 spring & ceramic magnet
Case material & dial size	Stainless steel (SS 304): 2", 2.5", 3.5", 4", 4.5", 6" Engineering polymer: 2.5", 4.5", 6" Bayonet: 4"
Mounting	Direct, front flange, 2" pipe & surface mounting
Maximum working pressure	100 bar / 1500 psi
Maximum process temperature	0 to 80°C (32 to 175°F)
Body material	Aluminum, Brass, SS 316 & Monel
Diaphragm	Buna-N, Viton, EPDM
Window	Float glass (Std.), toughened glass, acrylic & safety glass
Connection	1/4" NPT(F) (Std.), 1/4" BSP(F) and others (through adaptor)
Porting	In-line, rear, bottom, bottom & vent, in-line & vent, in-line & bottom, in-line & back, bottom vent & inline
Over range protection	Up to the max. working pressure from high side
Protection for gauge & switch	IP 65 / NEMA-4

Options

Switches (Adjustable in 30-100% of FSD)

Liquid filling	1 or 2 SPSTs with a DIN plug
Red follower pointer	1 or 2 SPSTs with a terminal strip
Customer logo	1 SPST with a built in relay
Dual scale	1 or 2 SPDTs with a terminal strip
Colour band	1 or 2 SPDTs with a DIN plug
Filter mesh in (+) connection	
Descending calibration	

Instrument can be calibrated with square root scale for flow measurement.

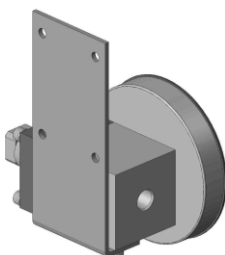
Available in engineering polymer (EP) Case



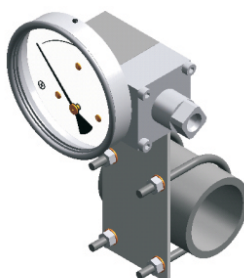
- Removable glass
- Strong and durable
- Panel mounting possible
- Condensation can be cleaned
- Light weight

MOUNTING BRACKETS

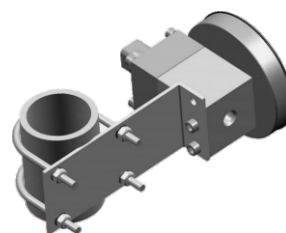
Surface mounting



Horizontal pipe mounting



Vertical pipe mounting



Panel / Flange mounting

