

bar-stock thermowells, tapered shank, with threaded connection, NP250

W50, W60 serie



Thermowells are used to protect the measuring instrument from corrosion, high pressure or high fluid velocity and to allow the measuring instrument removal for recalibration or replacement without affecting the process system. The W50-W60 serie includes bar-stocked thermowells with a threaded process connection and they are suitable for heavy work conditions. These thermowells have a conic immersion length.

9 - Thermowells

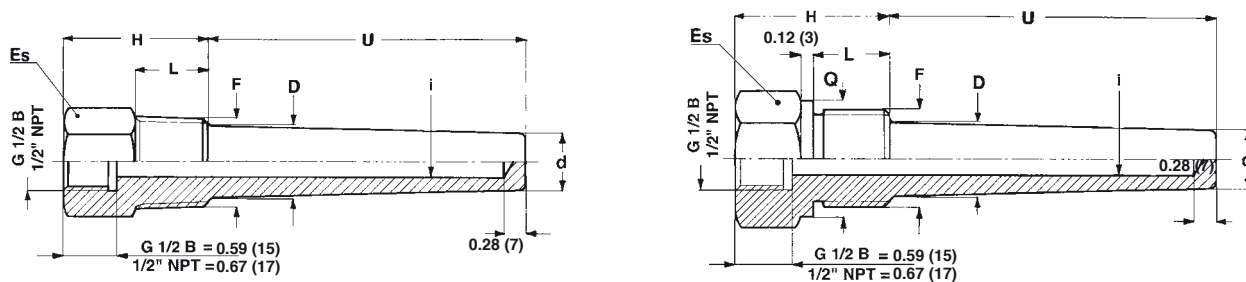
Nominal pressure: 3600 psi @ 752°F (250 bar @ 400°C).

Process fluid temperature: -328...+1112°F (-200...+600°C), for std materials.

Total length: 40" max (1000 mm).

Materials : AISI 316 (Cod. 4), AISI 316L (Cod. 5) st.st. bar-stock.

Special materials : Monel 400, Hastelloy C276, Alloy 825, Alloy 625, Duplex SAF 2205, Duplex SAF 2507 bar-stock.

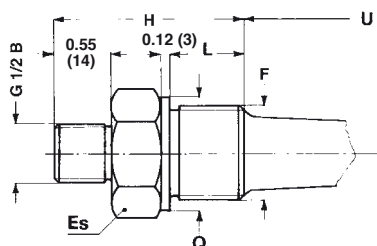
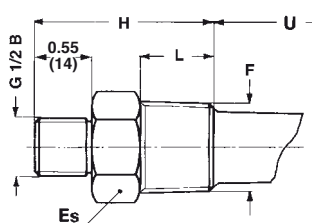


dimensions : inches (mm)

Mod.	Es.	F	i	D	d	H	L	Q
W52	1.06 (27) ⁽¹⁾	53M 3/4" NPT	0.28-0.31-0.35 (7 - 8 - 9)	0.91 (23)	0.71 (18)	1.81 (46)	0.79 (20)	-
			0.39-0.47 (10 - 12)		0.83 (21)			
W53	1.42 (36) ⁽²⁾	63M 1" NPT	0.28-0.31-0.35 (7 - 8 - 9)	1.14 (29)	0.71 (18)	2.01 (51)	0.98 (25)	-
			0.39-0.47 (10 - 12)		0.83 (21)			
W54	1.61 (41)	51M G 3/4 B	0.28-0.31-0.35 (7 - 8 - 9)	0.91 (23)	0.71 (18)	1.81 (46)	0.79 (20)	1.25 (31,7)
			0.39-0.47 (10 - 12)		0.83 (21)			
W54	1.61 (41)	61M G 1 B	0.28-0.31-0.35 (7 - 8 - 9)	1.14 (29)	0.71 (18)	2.01 (51)	0.98 (25)	1.54 (39)
			0.39-0.47 (10 - 12)		0.83 (21)			

(1) For insertion length > 16" (400 mm) and/or special material : round bar stock ø 1.18 (30mm) with 0.94" (24 mm) key.

(2) For insertion length > 28" (700 mm) and/or special material : round bar stock ø 1.38 (35mm) with 1.06" (27 mm) key.



dimensions : inches (mm)

Mod.	Es.	F	i	D	d	H	L	Q
W62	1.06 (27) ⁽¹⁾	53M 3/4" NPT	0.28-0.31-0.35 (7 - 8 -9)	0.91 (23)	0.71 (18)	2.24 (57)	0.79 (20)	-
			0.39-0.47 (10 - 12)		0.83 (21)			
W63	1.42 (36) ⁽²⁾	63M 1" NPT	0.28-0.31-0.35 (7 - 8 -9)	1.14 (29)	0.71 (18)	2.44 (62)	0.98 (25)	-
			0.39-0.47 (10 - 12)		0.83 (21)			
W64	1.61 (41)	51M G 3/4 B	0.28-0.31-0.35 (7 - 8 -9)	0.91 (23)	0.71 (18)	2.24 (57)	0.79 (20)	1.25 (31,7)
			0.39-0.47 (10 - 12)		0.83 (21)			
W64	1.61 (41)	61M G 1 B	0.28-0.31-0.35 (7 - 8 -9)	1.14 (29)	0.71 (18)	2.44 (62)	0.98 (25)	1.54 (39)
			0.39-0.47 (10 - 12)		0.83 (21)			

(1) For insertion length > 16" (400 mm) and/or special material : round bar stock $\varnothing 1.18$ (30mm) with 0.94" (24 mm) key.

(2) For insertion length > 28" (700 mm) and/or special material : round bar stock $\varnothing 1.38$ (35mm) with 1.06" (27 mm) key.

OPTIONS

P02 - Oxygen service
E30 - NACE MR0103 - MR0175 (ISO15156) certificate
TC1 - Plug and chain (1)
NIP - Nipple with coupling (1)
CVK - ASME PTC 19.3 TW calculation

i
070 - $\varnothing 0.28$ (7)
080 - $\varnothing 0.31$ (8)
090 - $\varnothing 0.35$ (9)
100 - $\varnothing 0.39$ (10)
120 - $\varnothing 0.47$ (12)

(1) Drawings and details in the "Thermowells information" sheet.

"HOW TO ORDER" SEQUENCE

Section	Model	Material	Instrument connection	Process connection	Insertion hole	Insertion length	Extension length	Options
9	W52	4	41F - G 1/2	51M	070			P02...CVK
	W53	5	43M - 1/2 NPT	61M	080			
	W54		41M - G 1/2 B	53M	090			
	W62			63M	100			
	W63				120			
	W64							
	W64							