

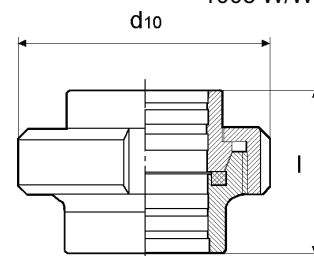
ACCESSOIRES ET CONTREPARTIES POUR SEPARATEURS SANITAIRE ET ALIMENTAIRES

DIN 11851 RACCORD UNION À MANDRINER WALSKOPPELING

NW/DN	10	15	20	25	32	40	50	65	80	100	125	150
d₁₀	38	44	54	63	70	78	92	112	127	148	178	210
l	34	34	36	45	51	53	57	65	75	89	70	76

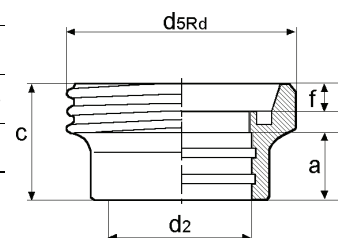
FIG.

1005 W/W



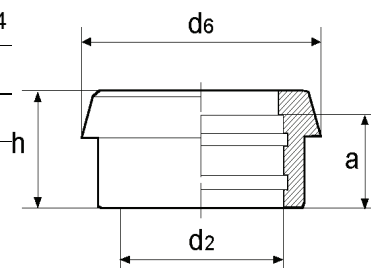
a	12	12	12	15	18	20	22	25	28	35	10	12
c	21	21	24	29	32	33	35	40	45	54	46	50
d₂	12,2	18,2	22,2	28,2	34,2	40,2	52,2	70,3	85,3	104,3	129,4	154,4
d_{5rd}	28x1/8"	34x1/8"	44x1/6"	52x1/6"	58x1/6"	65x1/6"	78x1/6"	95x1/6"	110x1/4	130x1/4	160x1/4	190x1/4
f	4	4	6	7	7	7	7	8	8	10	12	13

1001 G/W



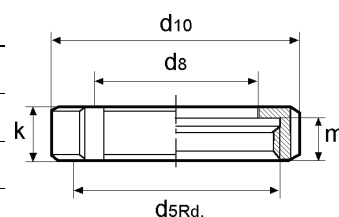
a	12	12	12	15	18	20	22	25	28	35	10	12
d₂	12,2	18,2	22,2	28,2	34,2	40,2	52,2	70,3	85,3	104,3	129,4	154,4
d₆	22	28	36	44	50	56	68	86	100	121	150	176
h	17	17	18	22	25	26	28	32	37	44	34	37

1002 K/W



d_{5rd}	28x1/8"	34x1/8"	44x1/6"	52x1/6"	58x1/6"	65x1/6"	78x1/6"	95x1/6"	110x1/4	130x1/4	160x1/4	190x1/4
d₈	19	25	31	36	42	49	62	80	94	115	138	164
d₁₀	38	44	54	63	70	78	92	112	127	148	178	210
k	18	18	20	21	21	21	22	25	29	31	35	40
m	15	15	17	18	18	18	19	21	25	26	30	34

1003 M

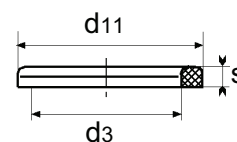


d₃	12	18	23	30	36	42	54	71	85	104	130	155
d₁₁	20	26	33	40	46	52	64	81	95	114	142	167
s	4,5	4,5	4,5	5	5	5	5	5	5	6	7	7

1004S - 1007P

1008E - 1009PT

1006V



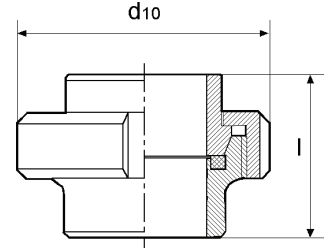
DIN 11851

RACCORD UNION À SOUDER
LASKOPPELING

NW/DN	10	15	20	25	32	40	50	65	80	100	125	150
d₁₀	38	44	54	63	70	78	92	112	127	148	178	210
l	34	34	36	45	51	53	57	65	75	89	70	76

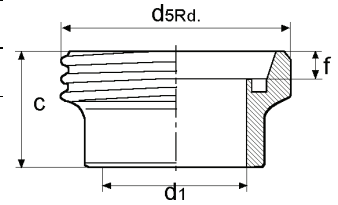
FIG.

1015 S/S



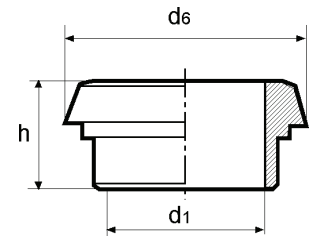
c	21	21	24	29	32	33	35	40	45	54	46	50
d₁	10	16	20	26	32	38	50	66	81	100	125	150
d_{5rd}	28x1/8	34x1/8	44x1/6	52x1/6	58x1/6	65x1/6	78x1/6	95x1/6	110x1/4	130x1/4	160x1/4	190x1/4
f	4	4	6	7	7	7	7	8	8	10	12	13

1011 G/S



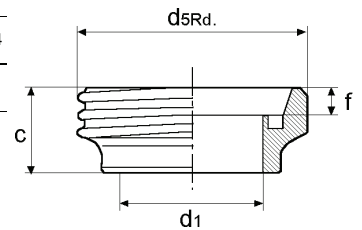
d₁	10	16	20	26	32	38	50	66	81	100	125	150
d₆	22	28	36	44	50	56	68	86	100	121	150	176
h	17	17	18	22	25	26	28	32	37	44	34	37

1012 K/S



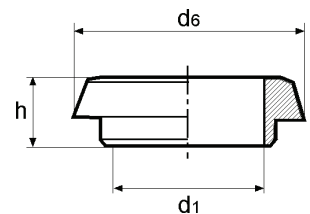
c	17	17	19	22	22	22	23	25	25	30	35	40
d₁	10	16	20	26	32	38	50	66	81	100	125	150
d_{5rd}	28x1/8	34x1/8	44x1/6	52x1/6	58x1/6	65x1/6	78x1/6	95x1/6	110x1/4	130x1/4	160x1/4	190x1/4
f	4	4	6	7	7	7	7	8	8	10	12	13

1021 G/S



d₁	10	16	20	26	32	38	50	66	81	100	125	150
d₆	22	28	36	44	50	56	68	86	100	121	150	174
h	13	13	13	15	15	15	16	17	17	20	23,5	27

1022 K/S



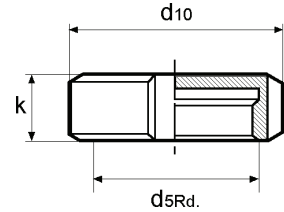
DIN 11851 BOUCHONS BLINDE MOER

NW/DN 10 15 20 25 32 40 50 65 80 100 125 150

FIG.

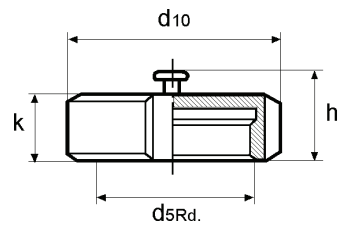
d_{5Rd.}	28x1/8"	34x1/8"	44x1/6"	52x1/6"	58x1/6"	65x1/6"	78x1/6"	95x1/6"	110x1/4	130x1/4	160x1/4	190x1/4
d₁₀	38	44	54	63	70	78	92	112	127	148	178	210
k	18	18	20	21	21	21	22	25	29	31	35	40

1023 M



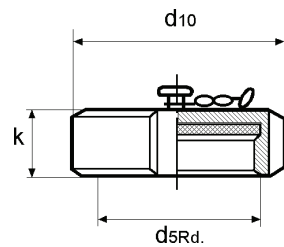
d_{5Rd.}	28x1/8"	34x1/8"	44x1/6"	52x1/6"	58x1/6"	65x1/6"	78x1/6"	95x1/6"	110x1/4	130x1/4	160x1/4	190x1/4
d₁₀	38	44	54	63	70	78	92	112	127	148	178	210
h	27	27	29	30	30	30	31	34	38	40	44	50
k	18	18	20	21	21	21	22	25	29	31	35	40

1024 M



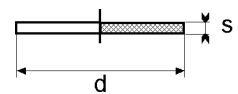
d_{5Rd.}	28x1/8"	34x1/8"	44x1/6"	52x1/6"	58x1/6"	65x1/6"	78x1/6"	95x1/6"	110x1/4	130x1/4	160x1/4	190x1/4
d₁₀	38	44	54	63	70	78	92	112	127	148	178	210
K	18	18	20	21	21	21	22	25	29	31	35	40

1025 M



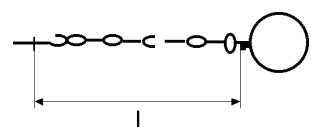
d	28	34	44	52	58	65	78	95	110	130	160	190
s	3	3	3	3	3	3	3	3	3	3	3	3

1029P - 1030E
1026S - 1028V



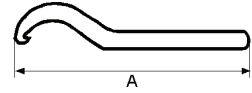
l	150	150	150	150	150	150	150	150	150	150	200	200
----------	-----	-----	-----	-----	-----	-----	-----	-----	-----	-----	-----	-----

1027

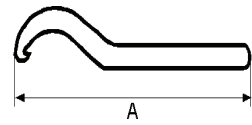


DIN 11851 ACCESSOIRES ONDERDELEN

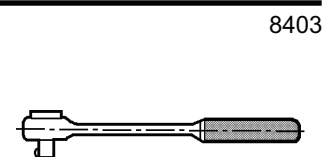
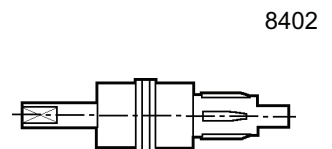
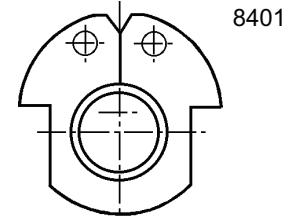
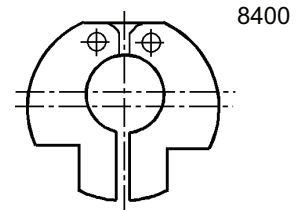
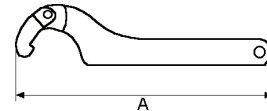
NW/DN	6	10	15	25	40	50	65	80	100	125	150	FIG.
A	200	200	200	200				370	370	370	370	8200



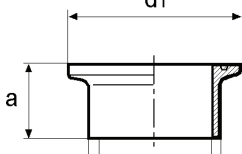
A		250	250	250	250	250	250					8500
----------	--	-----	-----	-----	-----	-----	-----	--	--	--	--	------

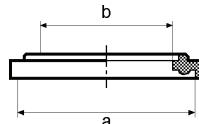


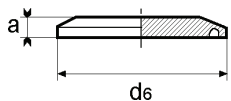
A			300	300	300	300	300	400	400			8510
----------	--	--	-----	-----	-----	-----	-----	-----	-----	--	--	------

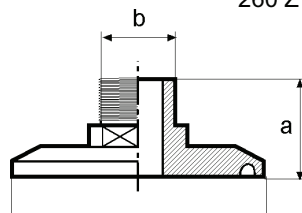


CLAMP ISO 2852

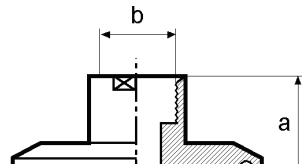
DIAM.	1/2"	3/4"	1"	1" 1/2	2"	2" 1/2	3"	4"	FIG.
d1	25	25	50,4	50,4	64	77,5	91	119	285 Z 
d6	9,4	15,8	22,1	34,8	47,5	60,2	72,8	97,2	
d2	12,7	19,05	25,4	38,1	50,8	63,5	76,1	101,6	
a	21,5	21,5	21,5	21,5	21,5	28,5	28,5		

a	25	25	50,4	50,8	64	77,5	91	119	288 Z 
b	9,5	16	23,1	35,3	48	60,5	72,3	97,8	

d6	25	25	50,4	50,4	64	77,5	91	119	285 BZ 
a	6	6	6	6	6,5	6,5	6,5	8	

a	28	28	28	28	35	50	60	60	260 Z 
d6	25	25	50,4	50,4	64	77,5	91	119	
b	1/4" ↓ 1/2"	1/4" ↓ 1/2"	1/4" ↓ 1/2"	1/4" ↓ 1"	1/4" ↓ 1"	1/4" ↓ 1"	1/4" ↓ 1" 1/2	1/2" ↓ 2"	

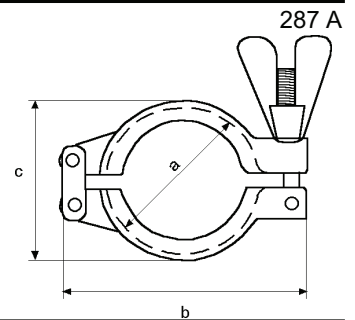
Filet BSP/GAZ (NPT sur demande) - BSP/Gas draad (NPT op aanvraag)

a	28	28	28	28	35	50	60	60	250 Z 
d6	25	25	50,4	50,4	64	77,5	91	119	
b	1/4" ↓ 1/2"	1/4" ↓ 1/2"	1/4" ↓ 1/2"	1/4" ↓ 1"	1/4" ↓ 1"	1/4" ↓ 1"	1/4" ↓ 1" 1/2	1/2" ↓ 2"	

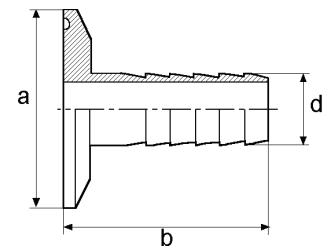
Filet BSP/GAZ (NPT sur demande) - BSP/Gas draad (NPT op aanvraag)

CLAMP ISO 2852

DIAM.	1/2"	3/4"	1"	1" 1/2	2"	2" 1/2	3"	4"
a	28		53		67	80	94	122
b	57		86		100	111	127	156
c	30		57		72	86	99	127

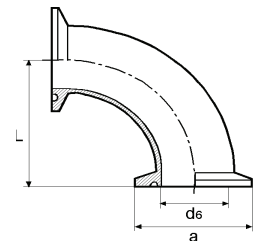


a	25	25	50,4	50,4	63,9	77,4	90,9	118,9
b	40	40	40	40	58,7	59,5	78,6	86,5
d	6	6	6	6				
	8	8	8	8				
	10	10	10	10				
	12	12	13,7	13,7	50,8	63,5	76,2	101,6
	13,7	13,7	16	16				
	16	16	18	18				
	18	18	21,3	21,3				
	21,3	21,3	25,4	25,4				
			38,1	38,1				

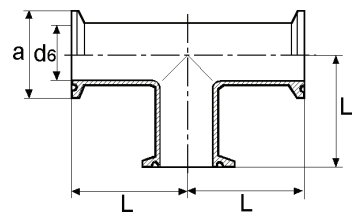


Toutes dimensions sur demande/Alle afmetingen op aanvraag

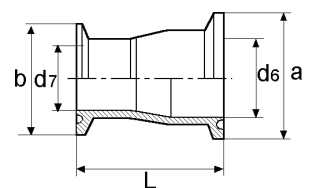
a	25	25	50,4	50,4	63,9	77,4	90,9	118,9
L	88	88	50	70	88,9	108	127	168
d6	9,4	15,8	22,1	34,8	47,5	59,5	72,2	97,6



a	25	25	50,4	50,4	63,9	77,4	90,9	118,9
L	67	67	60	70	88,9	88,9	95,3	114,3
d6	9,4	15,7	22,1	34,8	47,5	59,5	72,2	97,6

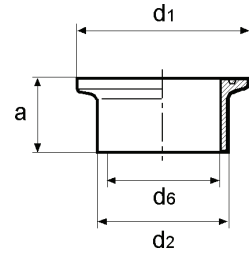


DIAM.	3/4"x1/2"	1"x1/2"	1"x3/4"	1"1/2x1/2	1"1/2x3/4	1"1/2x1"	2"x1"1/2	2"1/2x2	3" x 2"	3"x2"1/2	4" x 3"
L	50,8	50,8	50,8	50,8	50,8	92,4	92,4	92,4	92,4	92,4	95,5
a	25	50,4	50,4	50,4	50,4	50,4	64	91	106	106	119
b	25	25	25	25	25	50,4	50,8	64	64	77,5	91
d6	15,7	22,1	22,1	34,8	34,8	34,8	47,5	59,5	72,2	72,2	97,6
d7	9,4	9,5	15,8	9,4	15,8	22,1	34,8	48,8	48,8	59,5	72,2

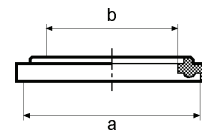


CLAMP DIN 32 676

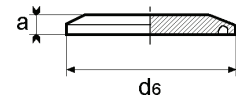
DN	10	15	20	25	32	40	50	65	80	100	FIG.
d1	34	34	34	50,5	50,5	50,5	64	91	106	119	285 DIN
d6	10	16	20	26	32	38	50	66	81	100	
d2	13	19	23	29	35	41	53	70	85	104	
a	18	18	18	21,5	21,5	21,5	21,5	28	28	28	



a	34	34	34	50,5	50,5	50,5	64	91	106	119	288 DIN
b	10,2	16,2	20,2	26,2	32,2	38,2	50,2	66,2	81,2	100,2	

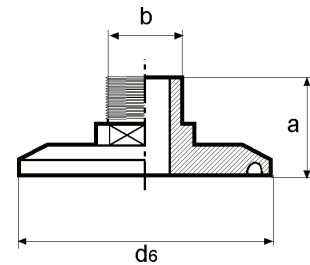


a	34	34	34	50,5	50,5	50,5	64	91	106	119	285 BDIN
b	6	6	6	6,5	6,5	6,5	7,5	8	8	8	



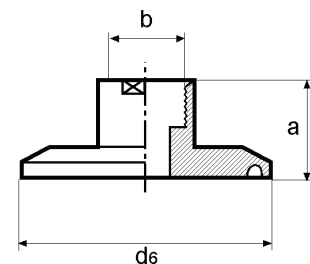
a	28	28	28	28	28	28	35	50	60	60	260 DIN
d6	34	34	34	50,5	50,5	50,5	64	91	106	119	
b	1/4" ↓ 1/2"	1/4" ↓ 1/2"	1/4" ↓ 1/2"	1/4" ↓ 1"	1/4" ↓ 1"	1/4" ↓ 1"	1/4" ↓ 1"	1/2" ↓ 2"	1/2" ↓ 3"	1/2" ↓ 4"	

Filet BSP/GAZ (NPT sur demande) - BSP/Gas draad (NPT op aanvraag)



a	28	28	28	28	28	28	35	50	60	60	250 DIN
d6	34	34	34	50,5	50,5	50,5	64	91	106	119	
b	1/4" ↓ 1/2"	1/4" ↓ 1/2"	1/4" ↓ 1/2"	1/4" ↓ 1"	1/4" ↓ 1"	1/4" ↓ 1"	1/4" ↓ 1"	1/2" ↓ 2"	1/2" ↓ 3"	1/2" ↓ 4"	

Filet BSP/GAZ (NPT sur demande) - BSP/Gas draad (NPT op aanvraag)

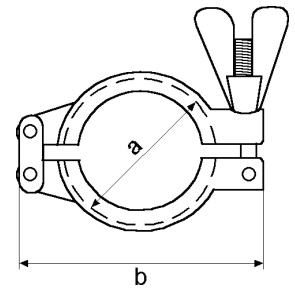


CLAMP DIN 32 676

DN	10	15	20	25	32	40	50	65	80	100
a	37	37	37	53	53	53	67	94	108	122
b	70	70	70	85	85	85	100	110	125	154

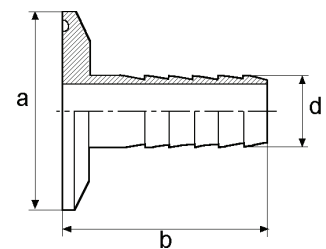
FIG.

287 DIN



a	34	34	34	50,5	50,5	50,5	64	91	106	119
b	40	40	40	40	40	40	60	80	85	90
d				6	6	6	10			
				8	8	8	12			
	6	6	6	10	10	10	16	21	43	53
	8	8	8	12	12	12	18	27	53	68
	10	10	10	16	16	16	21	34	68	83
	12	12	12	18	18	18	27	43	83	103
	16	16	16	21	21	21	34	53		
18	18	18	27	27	27	43	68			
			34	34	34	53				
			43	43	43					

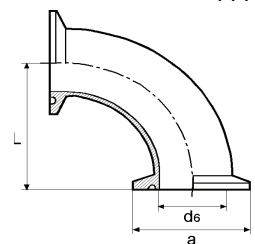
644 DIN



Toutes dimensions sur demande/Alle afmetingen op aanvraag

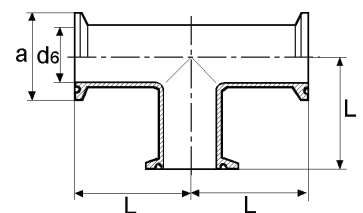
a	34	34	34	50,5	50,5	50,5	64	91	106	119
L				63	68	73	83	93	103	113
d6	10	16	19	26	32	38	50	66	81	100

444 DIN



a	34	34	34	50,5	50,5	50,5	64	91	106	119
L	39	48	53	63	68	73	83	93	103	113
d6	10	16	19	26	32	38	50	66	81	100

544 DIN



DIAM.	25x15	25x20	40x15	40x20	40x25	50x40	65x50	80x50	80x65	100x80
L					71	80	80		87	94
a	50,5	50,5	50,5	50,5	50,5	64	91	106	106	119
b	34	34	34	34	50,5	50,5	64	64	91	106
d6	26	26	38	38	38	50	66	81	81	100
d7	16	19	16	19	26	38	50	50	66	81

344 DIN

