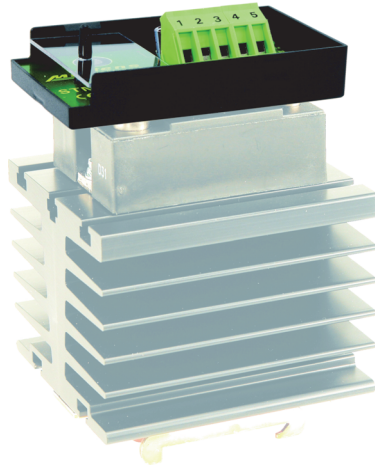


**Product Information**

# Continuous Input Drive Module STM40



- Direct mounting on the SSR
- Multi purpose input for 0/4..20 mA, 0..10 V DC
- Supply isolated
- Driving max. 3 SSR in parallel mode

## Characteristics

STM40 modules are used in temperature control systems in connection with solid-state-relays (SSR). It converts continuous input-signals from SPS or other controllers into a pulse-width-controlled signal, suitable to operate with SSR. Input-signal may be 0/4..20 mA or 0..10 V or an external potentiometer. One STM40 module can drive additional 2 external SSR, except when operating in potentiometer mode.

## Technical data

### Power supply

Supply voltage : 10.8..30 V DC, 17..30 V AC  
Power consumption : appr. 1.3 VA  
Operating temperature : -10..+60 °C  
CE-conformity : EN 61326-1:2013  
EN 60664-1:2007

### Control input

Voltage : 0..10 V DC, Ri = 40 kΩ, 3-times overload  
Current : 0/4..20 mA, Ri = 125 Ω, 3-times overload  
Resistance : or potentiometer 1 kΩ..100 kΩ

### Output

Output clock : bistable 0/8 V DC, max. 20 mA  
additional output for 2 SSR in parallel mode  
Clock cycle : 1 s

### Terminal cover

(Load) : acc. to German BGV A3 (included)

### Connection

(Control circuit) : screw terminal 1.5 mm<sup>2</sup> flexible wire  
or 2.5 mm<sup>2</sup> single wire

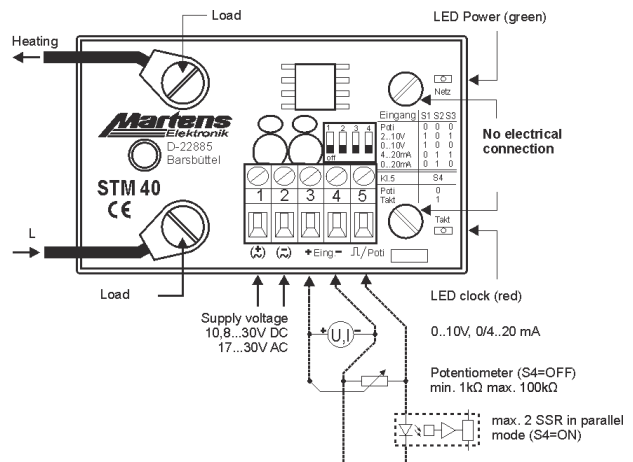
### Mounting

: on SSR, D-type

### Dimensions

: 46x75x32 mm (WxLxH)

## Connection diagram



## Ordering code

STM40 -  1. -  2.

<b>1. Terminal connection (including) fitting for SSR</b>	
US	US-thread 6-32 / 8-32
M3 / M4	DIN thread M3 / M4
M3 / M5	DIN thread M3 / M5
<b>2. Options</b>	
00	without option
<b>Accessories</b>	
PES30-10k	Potentiometer installation set, complete with 10 k Poti, mounting hole 22,5mm

### Potentiometer installation set

